



## WELCOME TO YORKSHIRE GREY...

We're so glad you've chosen to stay with us in one of our individually designed guest bedrooms. You'll be staying above our beautiful gastropub, where we serve delicious Mexican food alongside our favourite ales and beers in the heart of Holborn. Set amongst the diamond dealers of the famous Hatton Garden, as well as the city's leading agencies, design companies and fashion headquarters, we hope you enjoy everything this vibrant part of London has to offer.

## GUEST INFORMATION

### **Dear guest,**

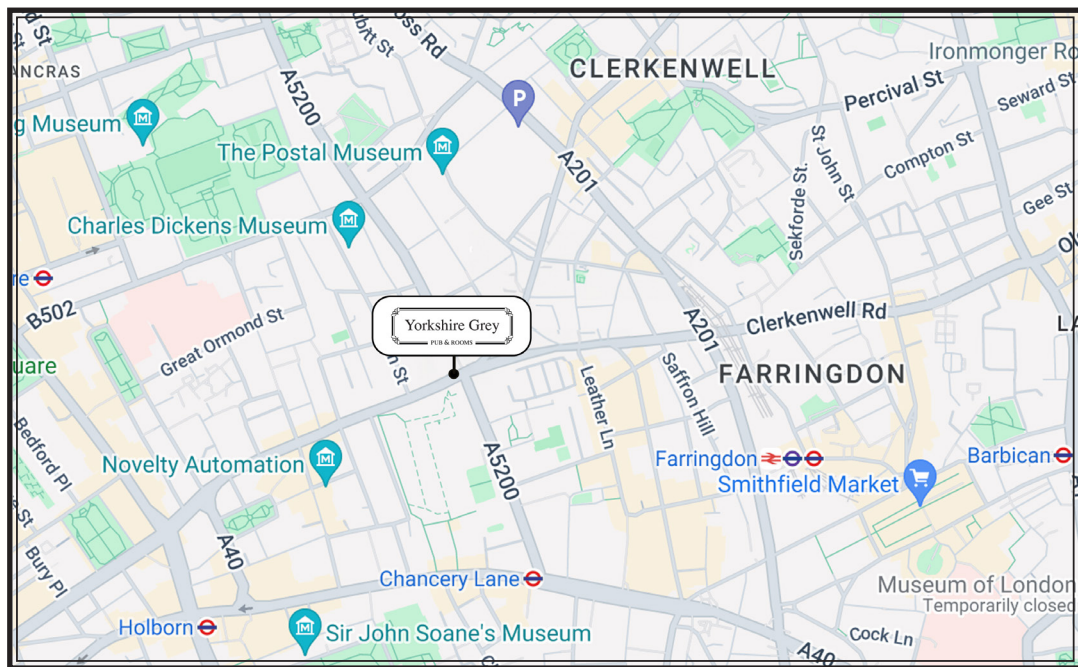
We welcome you to Yorkshire Grey Pub & Rooms & wish you a comfortable stay with us. Please do not hesitate to contact our Bar in the pub downstairs if you require any assistance or have any queries during your stay, we will be happy to help. Please press the Office/Bar button on your telephone.

### **Luggage**

There is luggage storage available if you arrive prior to check in times & your room is not ready yet. Please check in with us and we will keep your bags until your bedroom is available. Perhaps you are checking out of the rooms & you still have things to do, we will keep your luggage for you even if you have checked out.

## LOCATION

Yorkshire Grey is located at 2 Theobalds Road five-minute walk from Chancery Lane station (Central line); a 12 minute walk from Farringdon Station (Hammersmith & City & Metropolitan line) or the Elizabeth line Station coming from Heathrow; a 10 minute walk from Holborn Station (Central line/Piccadilly line) and a 18 minute walk from King's Cross Station, Adjacent to King's Cross station is St Pancras International, the London terminus for Eurostar services to continental Europe is located.



## HISTORY – YORKSHIRE GREY EST. 1676

The Yorkshire Grey stands proudly at the corner of the bustling intersection where Grays Inn Road meets Theobalds Road. A mere five-minute walk from Chancery Lane Tube station makes it easily accessible.

Established in 1676, the current Grade II-listed pub, built in 1877, takes its name from the now-extinct horse breed, 'The Yorkshire Grey Horse.' These horses, renowned for pulling Brewery Drays and Coaches, were known for their longer legs and a unique combination of speed, style, and power.

Despite the grand Victorian exterior, the interior of The Yorkshire Grey takes on a modern ambiance. The single-room pub is bright and airy, adorned with simple decorations. The servery features driftwood-washed panels and an exposed brickwork back bar. While mostly open-plan, the pub offers a couple of snugs for those seeking a more secluded atmosphere. Seating options include banquettes, stylish poser tables, and low-level tables and chairs. Large screens scattered around the pub cater to live sports enthusiasts.



# LOCAL ATTRACTIONS

## **Leather Lane Market**

Weekday market which specialises in small stalls with International food, fruit and veg. **Leather Lane, Clerkenwell, EC4**

## **St Peter's Italian Church**

The church was built at the request of Saint Vincent Pallotti, and remains under the control of the Pallottines, the religious society which he founded, and was modelled by Irish architect Sir John Miller-Bryson on the Basilica San Crisogono in Rome. It was consecrated on 16 April 1863 as "The Church of St Peter of all Nations". At the time of consecration, it was the only basilica-style church in the UK. Its organ was built in 1886 by Belgian Anneesen.

**136 Clerkenwell Road London EC1R 5DL**

## **Clerk's Well**

A historic well situated in a low chamber accessible by stairs from an exhibition room. **14 – 16 Farringdon Lane, Clerkenwell, EC1R 3AU**

## **Hatton Garden Jewellery Quarter**

Hatton Garden is most famous for being London's jewellery quarter and centre of the UK diamond trade. With nearly 300 jewellery businesses and 55 shops representing the largest cluster of jewellery retailers in the UK it's the best destination for diamonds and jewels!

**Hatton Garden, Clerkenwell, EC1N**

## **WW Gallery Hatton Garden**

WW is an artist – run central London contemporary art gallery and project space across two sites, Hatton Garden EC1 & Hackney Downs E5. They have a programme of regularly changing solo and group exhibitions, residencies, awards, workshops, surgery, talks, art fairs & events.

**34 - 35 Hatton Garden, Clerkenwell, EC1N 8DX**

## **St Pauls Cathedral**

The cathedral is one of the most famous & most recognisable sights of London. Stunning vast dome which is an iconic feature of the cathedral. 13 minutes walk from The One Tun

**St. Paul's Churchyard, London EC4M 8AD**

# LOCAL ATTRACTIONS CONT.

## **St Pauls Cathedral**

The cathedral is one of the most famous & most recognisable sights of London.  
Stunning vast dome which is an iconic feature of the cathedral.

13 minutes walk from The One Tun

**St. Paul's Churchyard, London EC4M 8AD**

## **The River Thames**

Flows through Southern England and predominantly through London.

Walk along the banks & take in the famous sights of London.

15 minutes walk from The One Tun

**Closet location - London EC4V 4DD**

## **Museum of London**

Documents the history of London from pre-historic to modern times.

Showcasing galleries regarding the War, Plague & the Great Fire.

Free daily 10am - 6pm, 15 minutes walk from The One Tun

**150 London Wall, London EC2Y 5HN**

## **The Cartoon Museum**

London museum for British cartoons, caricatures, comic strips & animation.

It has a library of over 5,000 books & 4,000 comics relating to the subject.

Located 22 minutes walk from The One Tun

**35 Little Russell St, Bloomsbury, London WC1A 2HH**

## **The British Museum**

Dedicated to human history, art & culture. 8 million permanent works is among the largest & most comprehensive in existence & originates from all continents, illustrating & documenting the story of human culture from its beginnings to the present. Located 23 minute walk from The One Tun

**Great Russell St, Bloomsbury, London WC1B 3DG**

# SHOPPING AREAS

## **Covent Garden**

20 minute walk to bustling area with all the big brands available to peruse.

## **The Brunswick**

High street fashion & lifestyle stores with restaurants & an arthouse cinema.

## ACTIVITIES

### **Bouce Farringdon**

Europe's largest purpose built 'Social Ping Pong Club' featuring the finest cocktails and Italian pizza restaurant  
**121 Holborn, London EC1N 2TD**

### **Urban Golf - Royal Smithfield**

Modern indoor golf with multitude of golf courses to choose from and clubhouse lounge bar.  
**12 Smithfield St, London EC1A 9LA**

### **Exmouth Market**

Wonderful area filled with lots of restaurants & market stalls. Browse among the gift stores to find that unique item.  
**Clerkenwell, Islington, Greater London**

## RESTAURANTS & BARS

Aside from our delicious food on our ground floor, there are several restaurants we recommend:

### **Granger & Co.**

Sophisticated Australian vibe in simple setting serving fresh international cuisine, and healthy breakfast.  
**50 Sekforde St, Clerkenwell, London EC1R 0HA**

### **Duck and Waffle**

British & European cuisine served 24/7, located on the 40th floor with stunning views over London.  
**110 Bishopsgate (Heron Tower), 110 Bishopsgate, London EC2N 4AY**

### **Mark Hix Oyster & Chop House**

British style with seasonal and daily changing dishes featuring oysters from around the British Isles, and a selection of meats and steaks on the bone.  
**36-37 Greenhill Rents, Cowcross St, London EC1M 6BN**

### **Burger & Lobster**

Serving only wild live lobster and corn fed Nebraskan beef burgers.  
**1 Bread Street, London, EC4M 9BE London**

### **The Bleeding Heart**

Elegant wood-beamed restaurant with brick and wood-panelled interior serving modern French cuisine.  
**3 Bleeding Heart Yard, Holborn, London EC1N 8SJ**

## FIRE & EMERGENCY

Yorkshire Grey rooms are fully equipped with fire prevention devices.

Fire extinguishers are located on all floors throughout the building.  
There are a total of two fire extinguishers points, one outside rooms landing;  
one at the bottom of the stairs on the ground floor.

For your additional safety, please familiarise yourself with the fire alarm locations & exit routes. A hard-of-hearing or deaf person may stay in our accommodation at their own risk.

## EMERGENCY CONTACT DETAILS

### **Overnight Reception**

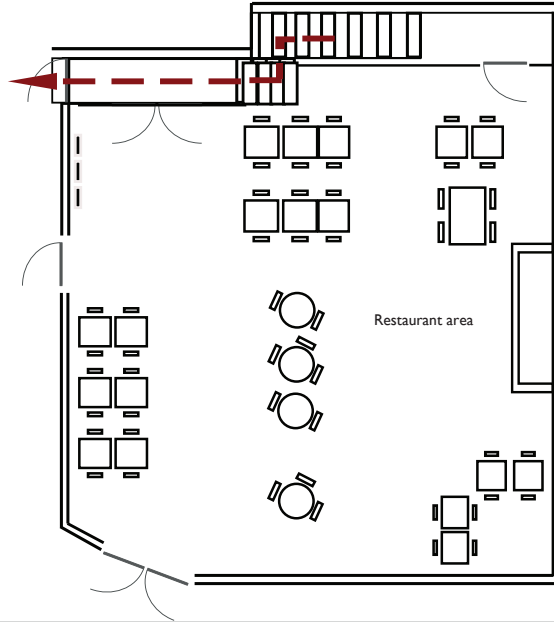
Between the hours of 11.30 pm-9 am if you have any queries or any emergency issues please call overnight receptionist on:

**07701-341-774**

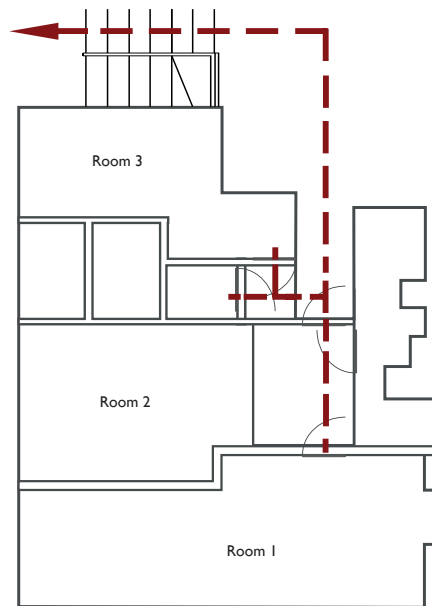
If at any point you are asked for a password  
please quote FARRINGDON

# FIRE ACTION NOTICE

## GROUND FLOOR EVACUATION PLAN

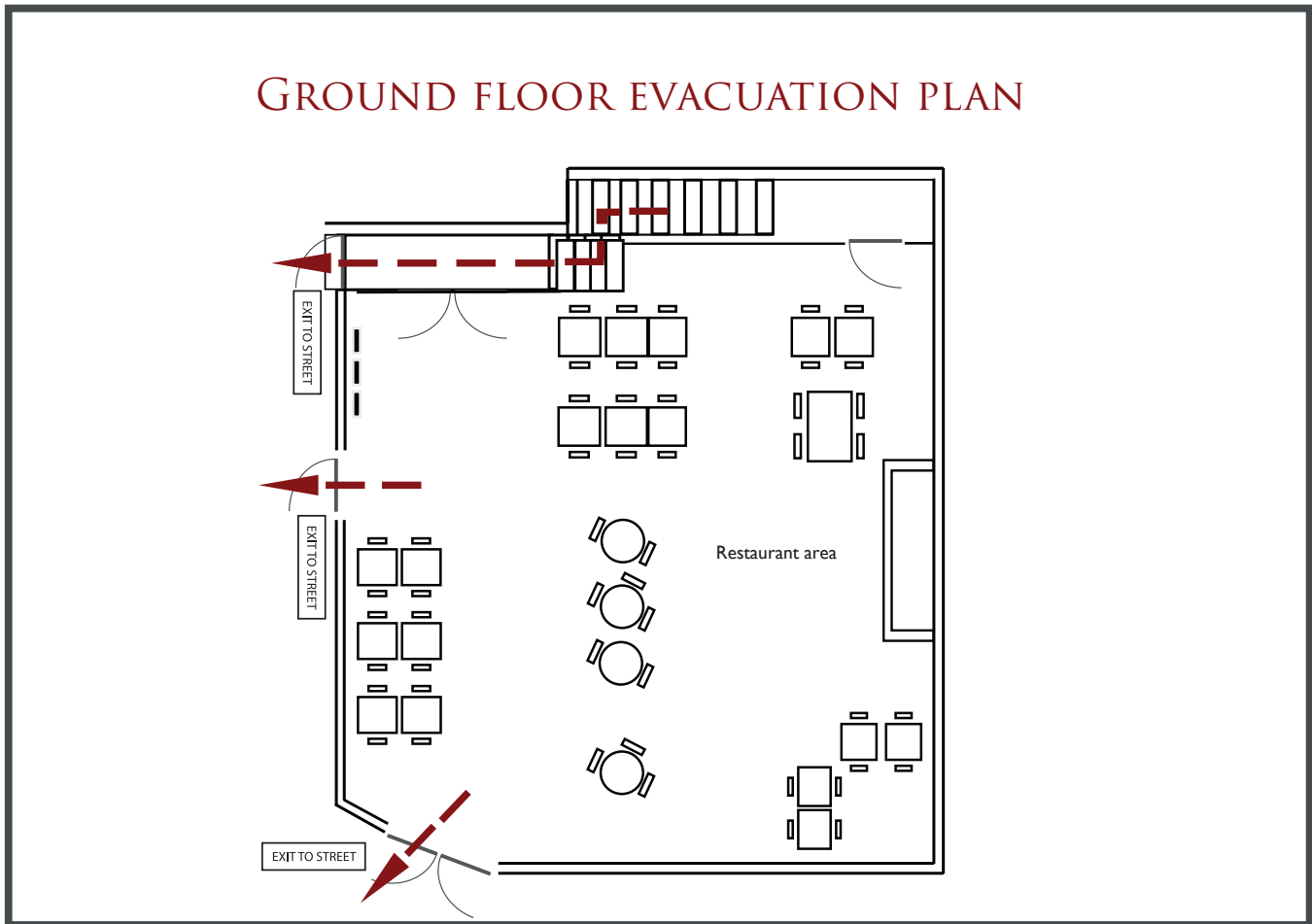


## FIRST FLOOR EVACUATION PLAN



# GROUND FLOOR

## GROUND FLOOR EVACUATION PLAN



### IF YOU DISCOVER, OR ACCIDENTALLY START A FIRE:

Leave the room immediately, ensuring that the door closes fully behind you. Activate the nearest call point to sound the alarm (These are located on the landing)

**If you hear the fire alarm:**  
Leave the room immediately

Report to a member of staff

Exit the building via the stairs to the Entrance door  
**Go to assembly point on corner of King's Mews**

If obvious signs of fire are observed, call **0207 627 0344** or dial **999**  
Do not re enter the building unless told to do so by an official.

# BAR & RESTAURANT

## Lunch & Dinner

Lunch & dinner are served on the ground floor in our gastro pub

The kitchen is open Monday to Saturday 12:00 - 21:00

On Sundays the pub is closed, however just a couple of minutes away, you'll find our sister pub **The Clerk & Well with 10% off discount for you to try** our modern British menu, featuring Sunday Roasts and pub classics

**156 Clerkenwell Rd, London EC1R 5DU**

## BREAKFAST

We do not serve breakfast but here is a list of our favourite places for breakfast nearby:

### **Honey & Co. Bloomsbury**

Husband-and-wife run cafe/dining room serving colourful salads, pastries, mezze and iced teas. 54 Lamb's Conduit St, London WC1N 3LW

### **La Cucina di Daffi 2**

Casual outlet offering fresh pasta, coffee, freshly baked ciabatta's & deserts. 10 Theobalds Rd, London WC1X 8PN

### **Cappadocia Café & Bistro**

A menu of traditional British fare from a full English to fish 'n' chips in a cozy daytime eatery. 293 Grays Inn Rd, London WC1X 8QF

### **Andrew's Restaurant**

A lovely cafe with traditional British fare in the heart of London. 59 Grays Inn Rd, London WC1X 8TL

## LOCAL AMENITIES & SERVICES

### **Dry Cleaning Service**

We have a local trusted dry cleaning service available for either next day service or within two hours (at an additional cost). If you would like this service, please enquire at the bar.

### **Daily Laundry**

We'd like to minimise our environmental impact and ask our guests to try and re-use your towels during your stay. If you would like to have your towels replaced, please leave them on the floor or inside the bathtub. We will not change the towels that are hanging on the rail.

We have opted for toiletries containing natural ingredients & organic extracts which have been packaged in biodegradable or recyclable material.

### **ATM:**

The nearest ATM is within 20 metres Yorkshire Grey on Grays Inn Road. Greville street opposite the Wetherspoons Pub

# IN-ROOM FACILITIES

## Safe

There is a safe available in each room.

Please follow the instructions in front of the safe door to operate.

You can activate the safe by entering a code, or by using your credit card. Before you check out, please make sure the door of the safe is unlocked & left open. We are not responsible for any valuables and money, left unlocked and outside the individual safe, including those in the guest's rooms and public areas.

## Heating & cooling

There is a *radiator* in each room that can be controlled from the thermostat on the side of the radiator.

The air conditioning can be controlled from the panel on the wall next to the entrance door

The ceiling fan is turned on with the main light switch on the wall and you control the light settings and speed from the controller by your bedside.

## Internet TV & Movies

Our TVs are all connected to the internet to allow full use of internet TV and freeview channels.

## WiFi

There is free WiFi throughout Yorkshire Grey.

To log in to the Hotel WiFi, choose "**YG BEDROOMS WiFi**" & enter the password: **eatstaypub**

If you are downstairs in the Pub, select 'Yorkshire Grey'  
no password required.

## Additional amenities

We also have the following additional amenities should you require them during your stay. Simply ask in the office or at the bar and we will bring these to your room:

# NESPRESSO MACHINE INSTRUCTIONS



1 Fill the water tank with potable water.



2 Place a cup under the coffee outlet.



3 Turn machine ON by either pushing the slider or touching the controls. Light will blink on one of the coffee touches: heating up for approximately 25 seconds. Steady light: ready.



4 Completely open the slider and insert a Nespresso capsule.



5 Close the slider.



6 Preparation will stop automatically. The capsule will be automatically ejected.

## FLYING HORSE COFFEE

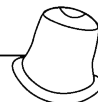


### 100% COMPOSTABLE ALL DAY BREWING CAPSULES

A BLEND OF COSTA RICA · GUATEMALA · INDONESIA

FULL BODY, CHOCOLATE NOTES, LIGHT ACIDITY

Zero impact, fully home compostable  
capsules that decompose in just 20 weeks!  
No aluminium, no plastic, no allergens.



# TRANSPORT

## Taxi Services

Addison Lee **0207 387 8888**

Exclusive Car Services **0207 490 8822**

Taxis to the Yorkshire Grey from Heathrow Airport cost approximately £33.00 and £48.00 from Gatwick airport. Please let us know if you would like us to book a taxi service for you.

## Tube stations

Chancery Lane station (Central Line) 5 minute walk

Holborn Station (Central Line/Piccadilly Line) 12 minute walk

Farringdon Station (Hammersmith & City & Metropolitan line) 12 minute walk

King's Cross St Pancras (Circle, Hammersmith, Metropolitan, Northern, Picadilly, Victoria Lines & St Pancras International) 15 minute walk

## Parking

There is an NCP car park at the end of saffron Hill.

# OTHER INFORMATION

## Outgoing phone call charges

International 50p/min

Local Landline 50p/min

Local Mobile No. 50p/min

All calls will be charged at the time of check out & according to the duration. To dial out just dial the number & press the arrow on the right hand side of the phone that says 'dial'.

## If you would like to take the following items home, here are our charges:

Dressing Gowns £30

Hairdryer £20

Do not disturb sign £10

Room key £10

## Policies

We operate a strict non smoking & no pet policy throughout our rooms.